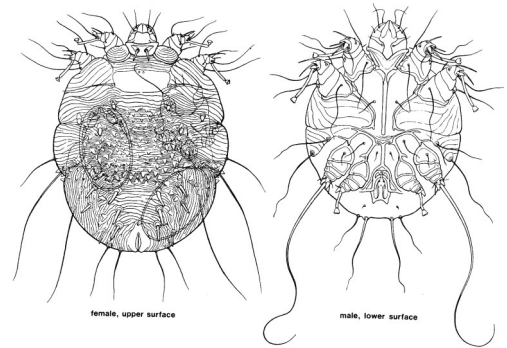
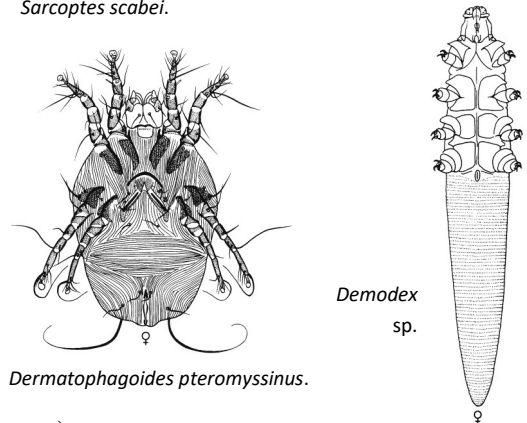


Mites of Medical Importance

- 1 Stigmata present as one lateral pair between bases of legs 2 and 4.....2
- Stigmata absent posterior to coxae II.....6
- 2 Legs short and stubby, anterior two pairs ending in discs, posterior two pairs ending in long bristles (Sarcoptidae)*Sarcoptes scabiei* (scabies mite)
- Legs normal and all similar in structure.....3
- 3 Body with two pairs of long posterior marginal setae (Pyroglyphidae).....*Dermatophagoides* sp. (house dust mites)
 with four pairs of long posterior marginal setae (Acaridae)
*Tyrophagus* sp. (mold mites)
- 4 Body unusually elongate, with worm-like annulations, aetose (Demodicidae).....*Demodex* sp. (hair follicle mites)
- Body not unusually elongate, setose.....5
- 5 Capitulum and palps conspicuous; body with feathery setae (parasitic larval stage has three leg pairs)
Trombiculidae species (chigger mites)
- Capitulum and palps inconspicuous; body with simple, non-feathery setae; not parasitic on vertebrates; females usually gravid (Pyemotidae).....*Pyemotes tritici* (hay itch mite)
- 6 Chelicerae long and whip-like, tapering apically, chelae at tips absent or very small (Dermanyssidae).....7
- Chelicerae not long and whip-like, shorter and stronger, chelae at tips blade-like, with or without teeth.....8
- 7 Body dorsally with two shields, a small posterior shield present in addition to main shield; anal shield egg-shaped, with central anal opening.....*Liponyssoides sanguineus* (mouse mites)
 dorsally with one shield; anal shield not egg-shaped, with anal opening at posterior end
*Dermanyssus gallinae* (chicken mites)
- 8 Dorsal shield clearly not covering dorsal body surface; genitoventral shield narrowed posteriorly; chelicerae with toothless chelae (Macronyssidae).....9

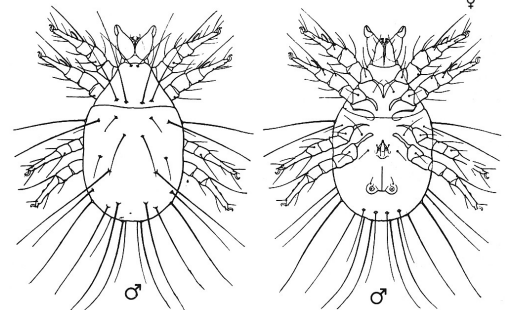


Sarcoptes scabiei.

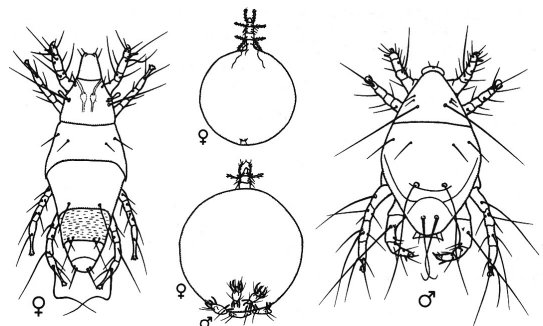


Demodex
sp.

Dermatophagoides pteromyssinus.



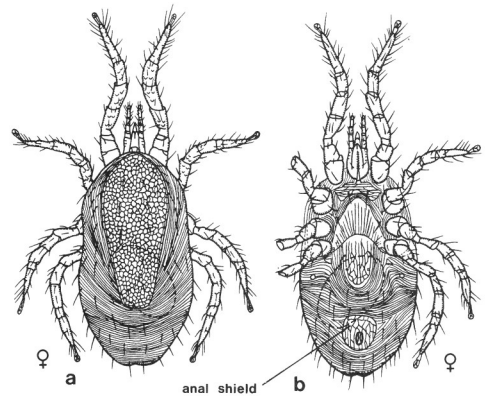
Tyrophagus putrescentiae.



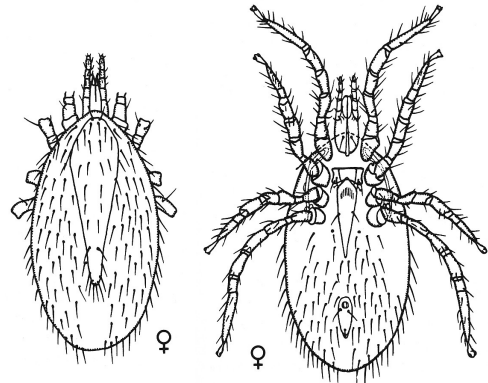
Pyemotes tritici.

- Dorsal shield covering dorsal body surface; genito-ventral shield not narrowed posteriorly; chelicerae usually with tooth chelae (Laelapidae).....11
- 9 Dorsal shield narrow and tapering posteriorly, with long setae.....*Ornithonyssus bacoti* (tropical rat mite)
- Dorsal shield broad, with short setae.....10
- 10 Sternal shield with two pairs of setae
.....*Ornithonyssus sylviarum* (northern fowl mite)
- Sternal shield with three pairs of setae
.....*Ornithonyssus bursa* (tropical fowl mite)
- 11 Genitoventral shield not widened posteriorly, with one pair of setae.....*Hirstionyssus isabellinus*
- Genitoventral shield widened posteriorly, with more than one pair of setae (rodent mites).....12
- 12 Body densely setose.....13
- Body with few setae, setae arranged in transverse rows
.....14
- 13 Genitoventral shield with pear-shaped outline
.....*Haemogamasus pontiger* (possum mites)
- Genitoventral shield with large subcircular outline
.....*Eulaelaps stabularis*
- 14 Genitoventral shield with concave posterior margin, surrounding anterior part of anal shield
.....*Laelaps echidninus*

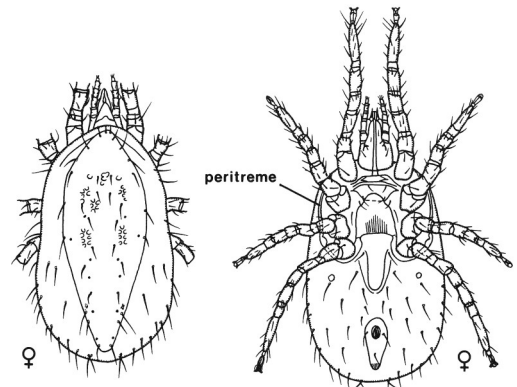
- shield with convex posterior margin, not surrounding anterior part of anal shield
.....*Laelaps nuttalli*



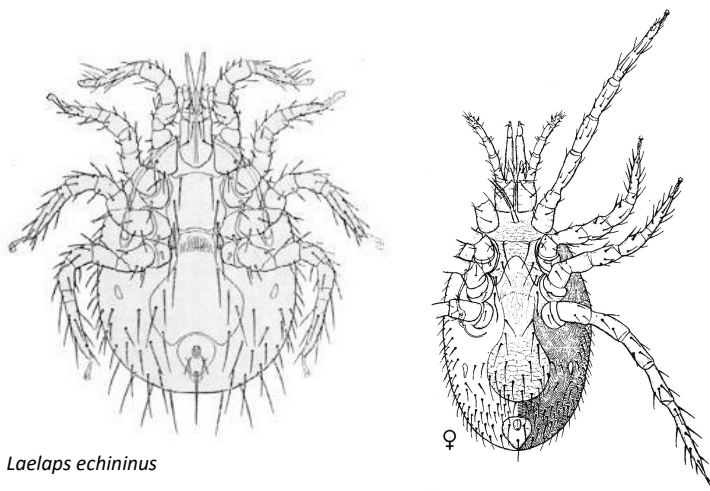
Dermanyssus gallinae, dorsum (left), venter (right).



Ornithonyssus bacoti, dorsum (left), venter (right).

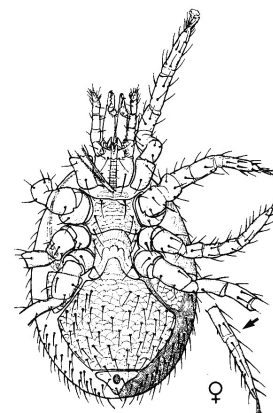


Ornithonyssus sylviarum, dorsum (left), venter (right).



Laelaps echinus

Haemogamasus pontiger



Eulaelaps stabularis.